

Für ARSnova

Student Group

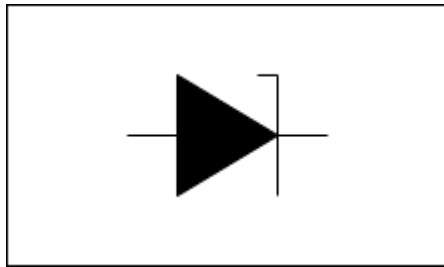
First Name	Surname	Matrikel Nr.

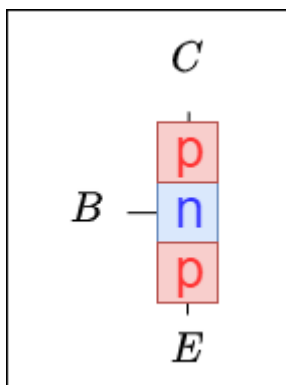
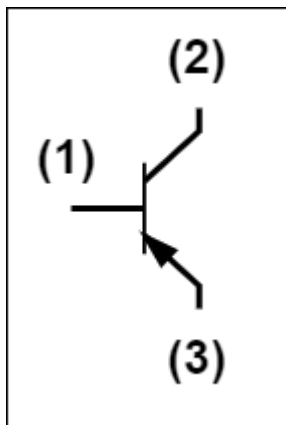
Table of Contents

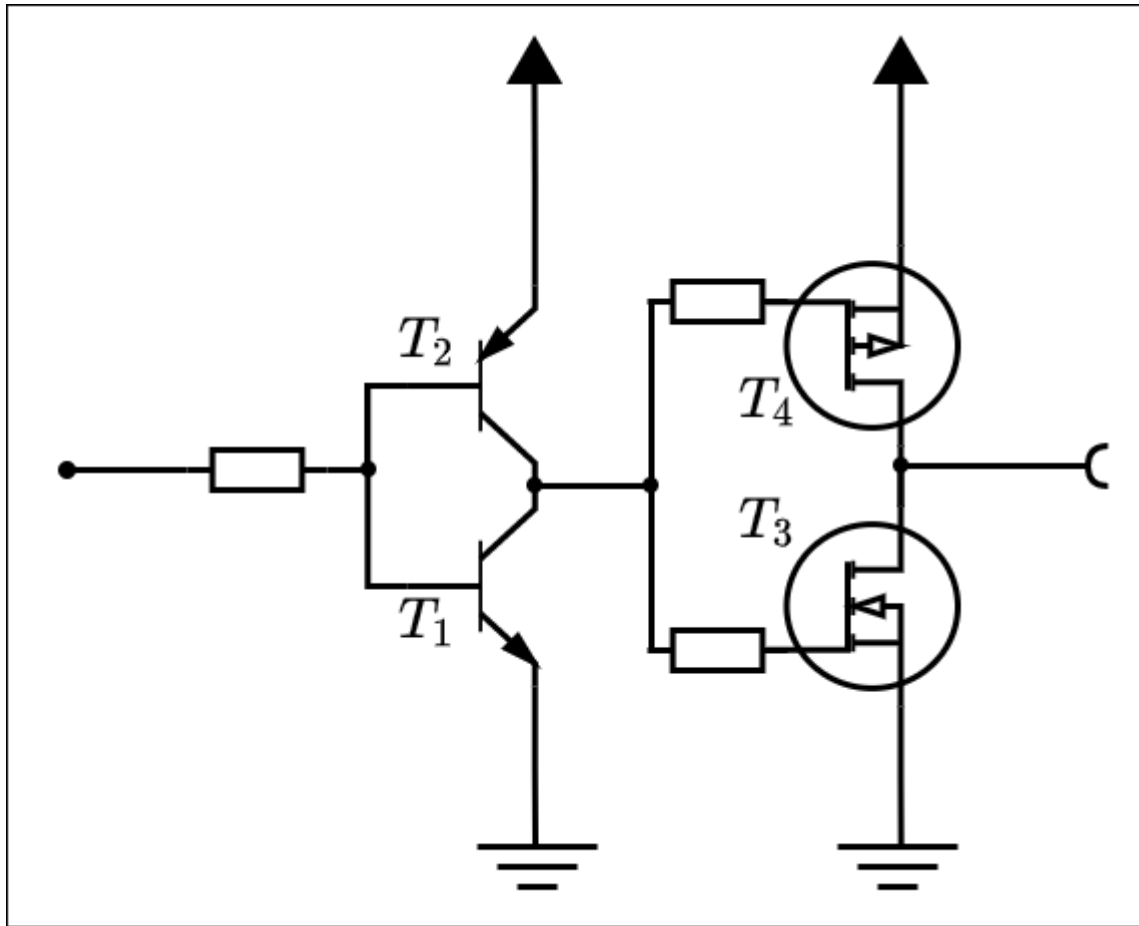
Für ARSnova	2
--------------------------	----------

Für ARSnova

Link: <https://arsnova.click/> \rightarrow HHN_EST_1 ...







From:
<https://wiki.mexle.org/> - MEXLE Wiki

Permanent link:
https://wiki.mexle.org/elektronische_schaltungstechnik/fuer_arsnova?rev=1651708565

Last update: 2022/05/05 01:56

