

# Experiment 2: Capacitors

## Student Group

First Name	Surname	Matrikel Nr.

## Table of Contents

- Lab Documents ..... 2
- Experiment 2: Capacitors** ..... 2
  - Objectives of the experiment*** ..... 2
  - Display of periodic signals on the oscilloscope** ..... 2
  - Capacitors** ..... 6
    - Direct capacitance measurement*** ..... 6
    - RC network*** ..... 9
  - General information on diodes** ..... 12
    - Z-diode*** ..... 13
    - Recording a diode characteristic curve with the oscilloscope in X-Y mode*** ..... 15
- Details on the lab equipment** ..... 17
  - Function generator ..... 17
  - Oscilloscope used ..... 18
    - Virtual oscilloscopes ..... 22
  - Preparation for the oral short test*** ..... 23

Name		
Matrikel-Nr.		Text is not SVG - cannot display

### Lab Documents

Download the [Lab documents here!](#)

# Experiment 2: Capacitors

## Objectives of the experiment

Getting to know the following components

- Digital multimeter
- Function generator
- Oscilloscope
- Breadboard

electrical-engineering learning outcome in

- generating and displaying periodic signals
- determining capacitances
- measuring the characteristic curve of a diode and a Zener diode

## Display of periodic signals on the oscilloscope

Build the following circuit in [figure 1](#) with the function generator and the oscilloscope.

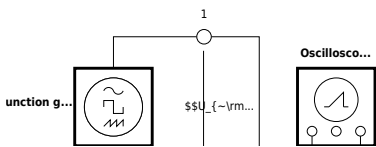


Fig. 1: Periodic signals on the oscilloscope

Set the signals listed in [table 1](#) on the function generator and draw the corresponding oscilloscope screen images. The signal display on the oscilloscope should optimally fill the screen

Signal shape	Frequency	Amplitude
Sine	1.0 kHz	1.8 V
Triangle	4.0 kHz	3.0 V
Square (unipo...	2.0 kHz	5.0 V
Square (bipol...	5.0 kHz	2.0 V
Sine... Text is not SVG - cannot display	2.5 kHz	4.0 V...

Tab. 1: Signals

Also document the settings of the used channels, the time base, and the GND line on the left side of the screen drawings.



Fig. 2: Sine,  $f = 1 \text{ kHz}$ ,  $U = 1.8\text{V}$

Channel 1:  $\frac{V}{\text{DIV}} = \$$

Time basis:  $\frac{T}{\text{DIV}} = \$$

---

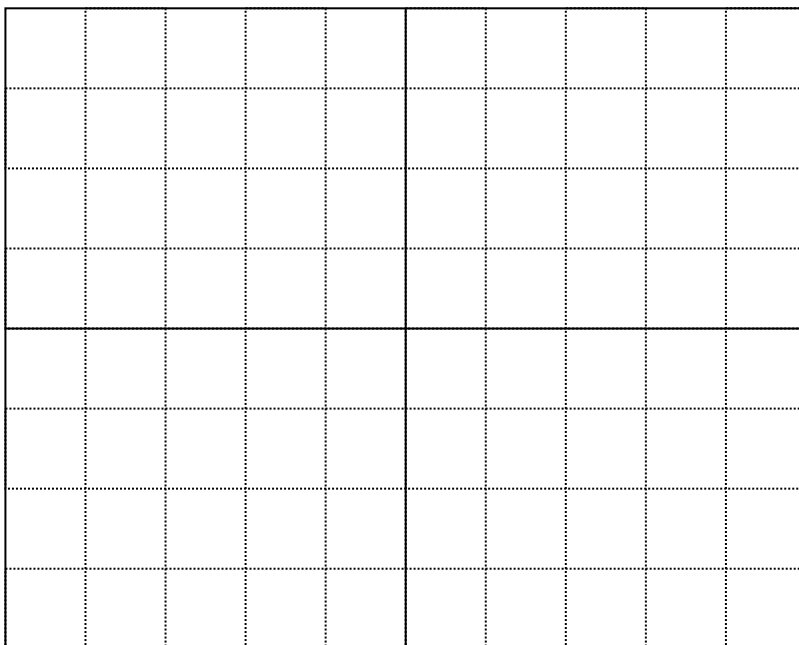


Fig. 3: Triangle,  $f = 4 \text{ kHz}$ ,  $U = 3 \text{ V}$

Channel 1:  $\frac{V}{\text{DIV}} = \$$

Time basis:  $\frac{T}{\text{DIV}} = \$$

---



Fig. 4: Rectangle, unipolar,  $f = 2 \text{ kHz}$ ,  $U = 5 \text{ V}$

Channel 1:  $\frac{V}{\text{DIV}} = \$$

Time basis:  $\frac{T}{\text{DIV}} = \$$



Fig. 5: Rectangle, bipolar,  $f = 5 \text{ kHz}$ ,  $U = 2 \text{ V}$

Channel 1:  $\frac{V}{\text{DIV}} = \$$

Time basis:  $\frac{T}{\text{DIV}} = \$$



Fig. 6: Sine DC Offset,  $f = 2.5 \text{ kHz}$ ,  $U = 4$

$V, U_{DC} = 2 \text{ V}$

Channel 1:  $\frac{V}{\text{DIV}} = \$$

Time basis:  $\frac{T}{\text{DIV}} = \$$

# Capacitors

## Direct capacitance measurement

Capacitors are components that allow the storage of electrical energy. In the charged state an electrical charge is present. This charge causes a voltage at the electrical terminals of the capacitor. Build the following circuit on the breadboard with three capacitors, s. [figure 7](#):

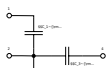


Fig. 7: Capacitors

Measure the capacitance of capacitors  $C_{\text{1}}$ ,  $C_{\text{2}}$ ,  $C_{\text{3}}$  with the multimeter and enter the measured values in [table 2](#).

$C_1$	$C_2$	$C_3$

Tab. 2: Capacitors

Capacitors can be connected in series and/or in parallel. The total capacitance of two or more capacitors in parallel is calculated as:

$$C_{\text{total}} = C_1 + C_2 + \dots + C_n$$

The total capacitance of capacitors connected in series is calculated as:

$$\frac{1}{C_{\text{total}}} = \frac{1}{C_1} + \frac{1}{C_2} + \dots + \frac{1}{C_n}$$

Series connection:

- $C_1 + C_2$  (measured between terminals 1 and 3)
- $C_2 + C_3$  (measured between terminals 3 and 4)

Parallel connection:

- $C_1 \parallel C_3$  (measured between terminals 1 and 2; wire bridge between 1 and 4)
- $C_1 \parallel C_2$  (measured between terminals 1 and 2; wire bridge between 1 and 3)

Series/parallel connection:

- $C_{1} + (C_{2} \parallel C_{3})$  (measured between terminals 1 and 3; wire bridge between 3 and 4)

Enter the measured and calculated values in [table 3](#).


Tab. 3: Capacitor meas. vs. calc.

The built-in capacitors have values from the E6 series. The E6 series for capacities is shown below. For the measured capacities from [table 2](#), determine the matching value from the E6 series and calculate the respective measurement deviation from the nominal value in %.

$$\text{Deviation} = \frac{C_{\text{meas}} - C_{\text{nom, E6 series}}}{C_{\text{nom, E6 series}}} \cdot 100\%$$

Enter your results in the spaces provided below.

$C_1$  (E6) ≈ {rm .....} ( {rm Deviation .....} { \% } ) \$

$C_2$  (E6) ≈ {rm .....} ( {rm Deviation .....} { \% } ) \$

$C_3$  (E6) ≈ {rm .....} ( {rm Deviation .....} { \% } ) \$

**The E6 series for capacities in [table 4](#):**

100 nF	1 μF	10 μF	100 μF
150 nF	1,5 μF	15 μF	150 μF
220 nF	2,2 μF	22 μF	220 μF
330 nF	3.3 μF	33 μF	330 μF
470 nF	4.7 μF	47 μF	470 μF
680 nF	6.8 μF	68 μF	680 μF

Tab. 4: E6 series for capacitors

# RC network

The capacitance of a capacitor is defined as the quotient of charge by voltage:  $C = \frac{Q}{U}$

Capacitors must be charged via an electrical source [figure 8](#).

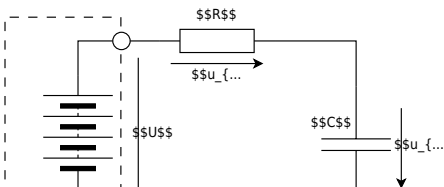


Fig. 8: Capacitor charging

A capacitor charges the faster the smaller the series resistor  $R$  is. During charging, the voltage  $u_C$  results from a differential equation as:  $u_C(t) = U \cdot (1 - e^{-\frac{t}{\tau}})$ ,  $\tau = R \cdot C$

The constant  $\tau$  is called the time constant. After this time, the capacitor is charged to approx.  $63\%$ . The fundamental equation for the relation between current and voltage at a capacitor is:

$$i_C(t) = C \cdot \frac{du_C}{dt}$$

From the two equations, the current through the capacitor is:  $i_C(t) = \frac{U}{R} \cdot e^{-\frac{t}{\tau}}$

The graphical representation of voltage and current during the charging of a capacitor over time is shown in [figure 9](#).

Fig. 9: Voltage/Current in case of charging capacitor

Because of the exponential function, charging is theoretically only complete after an infinitely long

time. The capacitor voltage equals  $U$  after  $1 \cdot \tau$ ,  $0.63U$  after  $2 \cdot \tau$ ,  $0.37U$  after  $3 \cdot \tau$ ,  $0.25U$  after  $4 \cdot \tau$ , and  $0.15U$  after  $5 \cdot \tau$ . It is assumed that the capacitor is fully charged after a time span  $T = 5 \cdot \tau$  and the voltage across the capacitor has reached  $U$ . If the charged capacitor  $C$  is discharged through a resistor  $R$ , the solution of the differential equation for the voltage is:

$$u_C(t) = U \cdot e^{-\frac{t}{\tau}}$$

For the current accordingly:

$$i_C(t) = -\frac{U}{R} \cdot e^{-\frac{t}{\tau}}$$

Now build the following circuit. Connect the function generator and the oscilloscope to the circuit as shown in [figure 10](#).



Fig. 10: Circuit with oscilloscope + function generator

Connect the function generator's ground (black) to point 2 and the signal lead to point 1. For the oscilloscope connection use the BNC-banana adapter; the red socket is the signal input and the black socket is the ground connection to the oscilloscope. Connect Channel 1 to point 3, Channel 2 to point

4, and ground to point 5. You only need to make the ground connection to the oscilloscope once, since the ground lines are connected inside the oscilloscope.

Enter in [table 5](#) both the measured values of the components used and the calculated time constant  $\tau$ .

\_\_\_\_\_

Tab. 5: Capacitor meas. + time constant  $\tau$

Set the voltage  $u_{\text{F}}$  generated by the function generator to a unipolar square with amplitude 5 V (i.e., no negative signal voltages occur!). The frequency on the function generator must be chosen so that the capacitor just fully charges and then fully discharges again. Calculate the frequency to be set:

$f_1 = \sim \{ \dots \}$

Sketch the voltages measured with the oscilloscope for  $u_{\text{F}}$ ,  $u_{\text{C}}$ , and  $u_{\text{R}}$  in the following screen diagram. Also enter alongside the screen drawings the set  $\frac{V}{\text{DIV}}$  of the channels and the  $\frac{T}{\text{DIV}}$  of the time base.

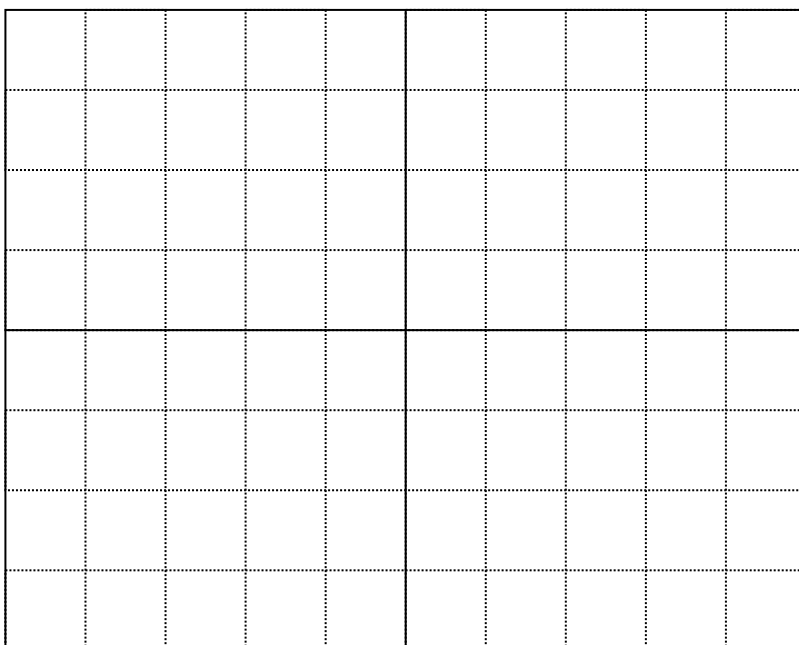


Fig. 11:  $u_{\text{F}}$ ,  $u_{\text{C}}$ ,  $u_{\text{R}}$

Channel 1:  $\frac{V}{\text{DIV}} =$  \$

Channel 2:  $\frac{V}{\text{DIV}} =$  \$

Time basis:  $\frac{T}{\text{DIV}} =$

Draw **tangents** in the screen diagram for the start of charging and the start of discharging. What is the charging current or discharging current at the beginning?

$\text{\rm .....}$

$\text{\rm .....}$

The circuit is now to be operated at higher frequencies. Set the frequency to:

- $f_2 = \sim 10 \cdot f_1$
- $f_3 = \sim 100 \cdot f_1$

Measure the waveforms for  $u_F$ ,  $u_C$  and document the results in the following [table 6](#):


Tab. 6: Voltage curve  $u_F$   $u_C$

Explain your observations for the measurements with  $f_2$ ,  $f_3$ :

$\text{\rm .....}$

$\text{\rm .....}$

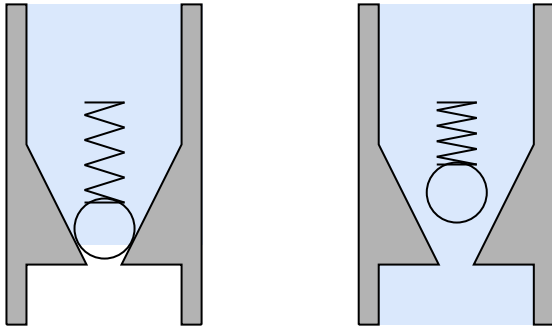
$\text{\rm .....}$

$\text{\rm .....}$

## General information on diodes

The diode (also called rectifier diode) is a semiconductor device with two terminals that has a nonlinear current-voltage-characteristic. It can be regarded as a voltage-dependent switch. The

function of a rectifier diode in normal operation can most easily be imagined as a check valve, s. [figure 12](#). If pressure (voltage) is applied to this valve (diode) in the blocking direction, the current flow is blocked. In the opposite direction the pressure must become large enough to overcome the spring pressure of the valve (blocking voltage). Then the valve opens and current can flow. The voltage needed in this mechanical model to overcome the spring pressure corresponds to the so-called forward voltage. A certain forward-direction voltage must first be present for the diode to go into the conducting state. For ordinary silicon diodes this necessary forward voltage is approx. 0.7 V for currents in the mA range.



A closed...  
Text is not SVG - cannot display An open...

Fig. 12: Valve characterization

## Z-diode

Often, the voltage across a load is to be constant; for example in microelectronics, where the allowable operating voltage is mostly between 4.75 V and 5.25 V. This rather narrow range cannot be achieved with simple power supplies. A reference voltage source (regulated voltage) is needed. Z-diodes can be used well for small powers. The Zener effect was discovered in 1934 by Clarence Malvin Zener. Normal diodes are destroyed in reverse operation if a certain voltage threshold is exceeded — one speaks of the diode's breakdown. Zener found that specially doped diodes (Z-diodes) operated in reverse can withstand this breakdown voltage. Since the breakdown voltage (also called Zener voltage) is nearly constant, Z-diodes are suitable as a voltage reference when operated in breakdown. When operated in forward direction or in reverse with voltages below the Zener voltage, Z-diodes behave like normal diodes.

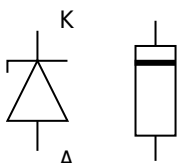


Fig. 13: Circuit symbol for a Z-diode

### Inform yourself about Z-diodes and their circuit.

The function generator is to feed a rippled voltage into a circuit consisting of a Z-diode and series resistor. The generator voltage and the voltage at the Z-diode are to be measured with the oscilloscope. Draw the circuit with generator, Z-diode and series resistor as well as oscilloscope with the given values:

- Zener diode: Z 2.4 V / 0.01 W
- Function generator

- Amplitude: 1 V
- DC offset: +5 V
- Frequency: 50 Hz.

Determine the required resistor for current limiting of the Zener diode under the above condition (document your calculation below!).

Which resistors from the E-series can be used?

$\{\rm \dots\}$

Is it better to choose a higher or lower resistor? Why?

$\{\rm \dots\}$

$\{\rm \dots\}$

$\{\rm \dots\}$

Build the circuit and set the generator voltage accordingly. Now measure with the oscilloscope the voltage after the generator with Channel 1 and after the Zener diode with Channel 2. Enter the oscilloscope traces in the [figure 14](#) shown below. Label the traces of the corresponding voltages.

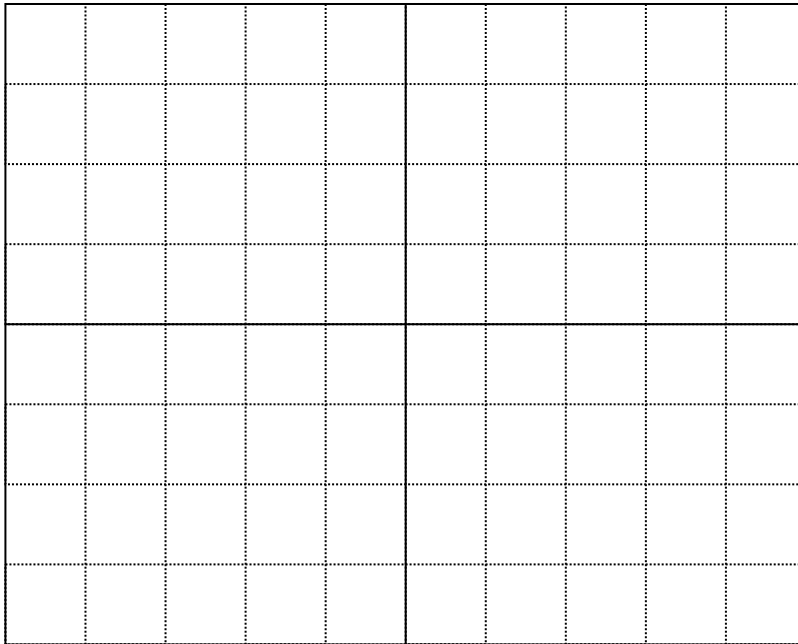


Fig. 14: Screen diagram

Channel 1:  $\frac{V}{\text{DIV}} = \$$

Channel 2:  $\frac{V}{\text{DIV}} = \$$

Time basis:  $\frac{T}{\text{DIV}} = \$$

## Recording a diode characteristic curve with the oscilloscope in X-Y mode

The representation of a diode characteristic on the oscilloscope is done using the circuit in [figure 15](#). As an AC source for recording the characteristic, the function generator is used, which feeds a sine signal with a frequency of 20 Hz into the circuit. This sine signal must not contain any DC component (no offset), otherwise the characteristic cannot be displayed correctly on the oscilloscope. The diode voltage  $u_{\text{D}}$  must be applied to Channel 1. The voltage drop across the resistor  $u_{\text{R}}$  is proportional to the current through the diode and is applied to Channel 2. The necessary ground connection for the oscilloscope lies between the resistor and the diode. For this reason, Channel 1 must also be inverted for the measurement.

Fig. 15: Diode characteristic with oscilloscope

Record the screen image of the diode characteristic in [figure 16](#) and determine the forward voltage of the diode by placing a straight line in the screen diagram.



Fig. 16: Screen image diode

characteristic

Channel 1:  $\frac{V}{\text{DIV}} = \$$

Channel 2:  $\frac{V}{\text{DIV}} = \$$

Time basis:  $\frac{T}{\text{DIV}} = \$$

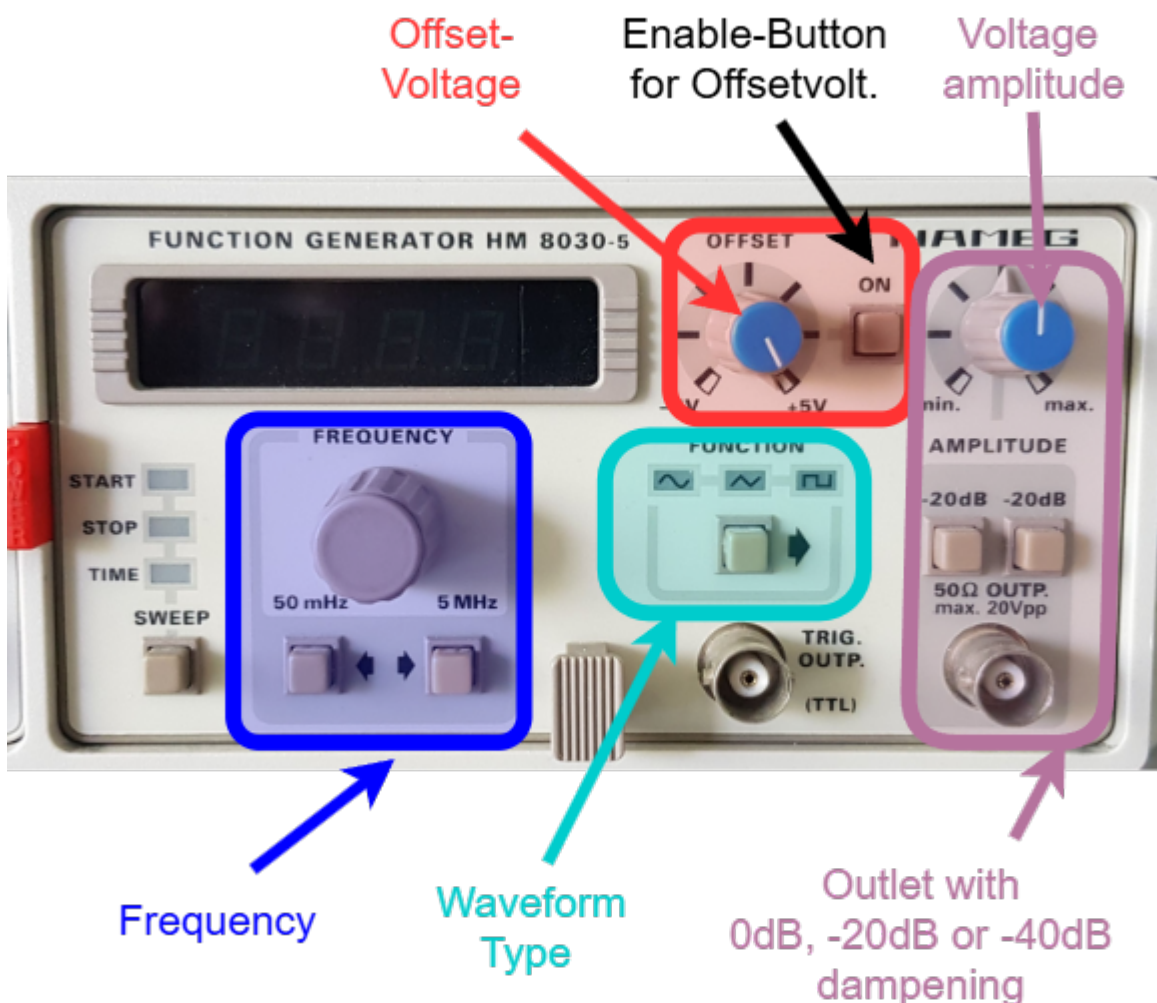
Give the determined forward voltage of the diode 1N4005P:

$\{\text{rm .....}\}$

# Details on the lab equipment

## Function generator

Fig. 17: Function generator HM8030-5



A function generator provides a variable voltage source. In general, these signals can be generated with different waveform shapes, frequencies, and amplitudes. These values can be adjusted on real function generators. In contrast to an ideal function generator, the output current of a real system is limited. As with a real voltage source, an output impedance is specified here.

In [figure 17](#) the function generator used in the lab is shown. It has an output impedance of  $50\ \Omega$ . In the following, the settings are briefly described:

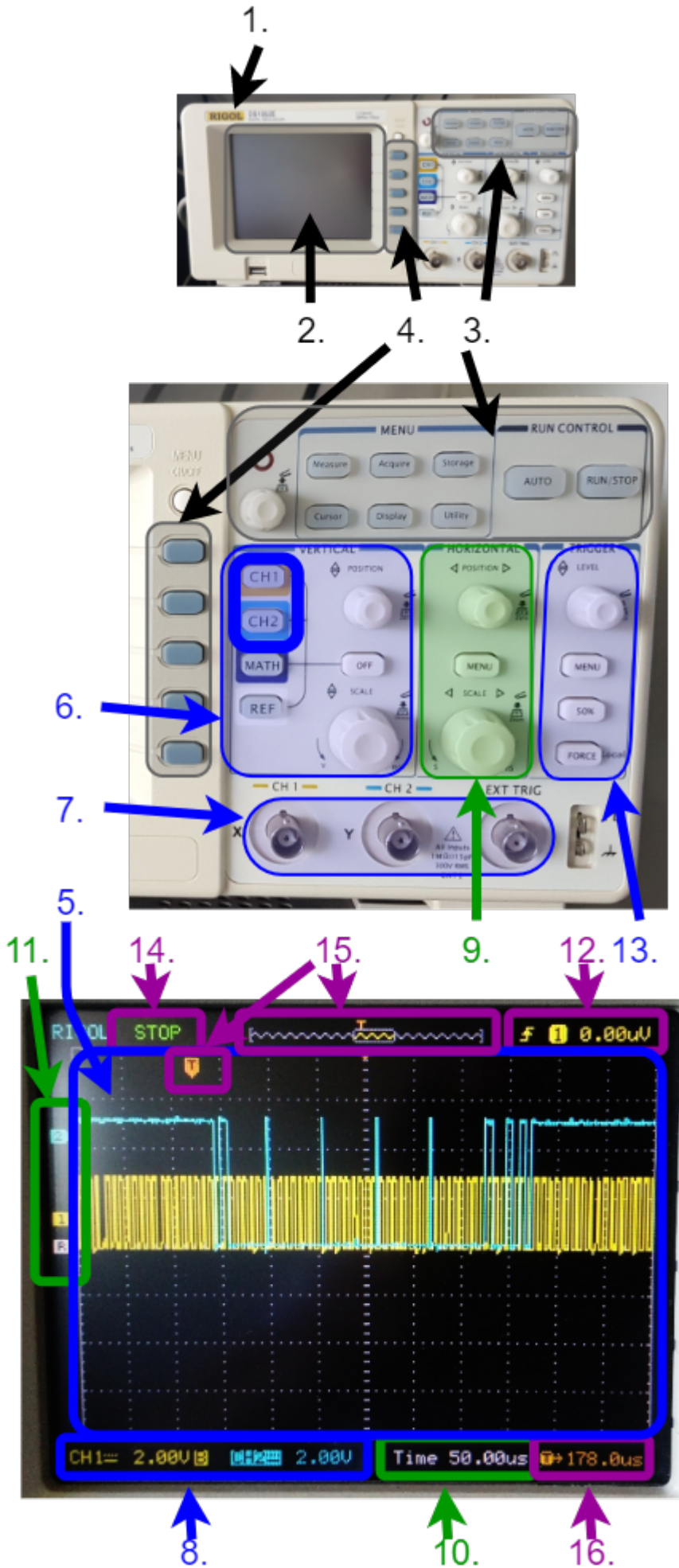
1. The waveform can be selected using the **FUNCTION** button. Pressing the button selects the next waveform. At start-up, the sine waveform ( $\wedge$ ) is selected; the following waveforms are: triangle and square or pulse. The waveforms can be seen in the simulation below; a sawtooth signal is not possible with this function generator.
2. The frequency can be changed via two inputs
  1. The potentiometer under **FREQUENCY** allows precise adjustment. Turning clockwise increases the frequency.
  2. Using the buttons under the potentiometer, the frequency can be changed by one decade—i.e., by a power of ten—down (button with arrow to the left) or up (button with arrow to the right). The limits are  $50\ \text{mHz}$  and  $5\ \text{MHz}$ .
3. There are also several controls for the voltage
  1. The potentiometer **OFFSET** allows precise selection of the DC component. To enable a DC component, press the **ON** button.
  2. At the output jack, two attenuations of  $-20\ \text{dB}$  can be switched on. This reduces the peak-to-peak voltage range from  $[0\ \text{V}, 10\ \text{V}]$  to  $[0\ \text{V}, 1\ \text{V}]$  or  $[0\ \text{V}, 0,1\ \text{V}]$ .
  3. The **AMPLITUDE**, i.e. the peak-to-peak voltage, can be finely adjusted using a potentiometer.

## Oscilloscope used

Even before the digital multimeter, the oscilloscope is the most important measuring instrument in electrical engineering and electronics. It makes it possible to display a voltage waveform  $u(t)$  over time  $t$ , observe it in “real time,” and measure it. In many experiments and analyses, it is a central component because it can make electrical processes visible. In addition to quantitative statements (how high is the voltage and when?), it is also helpful for qualitative results (for example: Is there a fault in the circuit?).

Fig. 18: Display and control panel of the oscilloscope DS1052E





Good knowledge of the oscilloscope is necessary for this experiment. In [figure 18](#) you can see the control panel of the DS1052E used, which is briefly described here.

Please use the buttons marked with “ ” to learn more about the individual functions

### General operation

1. On/off switch (**1.**)
2. Display area (**2.**)
3. Selection of operating modes (**3.**)
4. Menu selection buttons (**4.**)

- The oscilloscope can be **turned on/off** using the button on the top (**1.**)
- In the **display area (2.)** information is shown in the user interface after switching on, which is explained below
- At the top right (**3.**) two **operating modes** can be selected: single acquisition after a trigger signal (RUN/STOP) and automatic selection of various settings (AUTO). In addition, there are various menu selection buttons there, e.g. for the cursor menu (**3.**).
- In the menus, displayed functions can be selected via five **selection buttons (4.)**. The menus are not discussed further below.

### Signal display and input

- [Display window \(5.\)](#)
  - [Channel selection / horizontal controls \(6.\)](#)
  - [Input jacks \(7.\)](#)
  - [Channel coupling / voltage scale \(8.\)](#)
- 
- The largest area is the [display window \(5.\)](#). The display window shows 10 horizontal and 8 vertical divisions (eng. divisions, abbreviation Div.). As a rule, the voltage-time waveform is shown here.
  - In the figure, two waveforms are displayed simultaneously: channel 1 in yellow and channel 2 in mint. These can be switched on/off using the [channel selection \(6. top two buttons\)](#).
  - The signals are fed in via the [input jacks \(7.\)](#) (CH 1 : channel 1, CH 2 : channel 2)
  - For the signal, you can choose whether the DC component is suppressed (AC coupling) or not (DC coupling). The [channel coupling is shown in the display \(8.\)](#) as a line (= for DC coupling) or a tilde (~ for AC coupling)

### Scaling

- [vertical controls \(9.\)](#)
  - [horizontal controls \(6.\)](#)
  - [voltage scale \(8.\)](#)
  - [time base \(10.\)](#)
  - [signal mean values \(11.\)](#)
- 
- The voltage scale can be varied using the [vertical controls \(9.\)](#): **POSITION** shifts a waveform up/down. **SCALE** enlarges/reduces the vertical axis (= voltage axis).

- The same can be done for the time axis using the **horizontal controls (6.)**: it can also be shifted with **POSITION** and enlarged/reduced with **SCALE**.
- The current scaling can be read from the display area: In the image, a **voltage scale** of 2.00 V/Div for both signal waveforms (8.) and a **time base** of 50.00 us/Div (10.) are shown.
- The **signal mean values** are drawn to the left of the waveform (11.) as a small yellow arrow (channel 1) and a mint-colored arrow (channel 2). If a signal is above or below the displayed area due to incorrect scaling, the corresponding arrow is also shown at the top or bottom edge.

## Trigger

- Display of the trigger threshold at **signal mean values (11.)**
  - **Trigger threshold, trigger source (12.)**
  - **Trigger level (13.)**
  - **Acquisition status (14.)**
  - **Position in memory (15.)**
  - **Trigger delay (16.)**
- As a rule, acquisition should be triggered when a certain threshold is exceeded or fallen below. This threshold is called the trigger threshold.
  - The **trigger threshold, trigger source** (CH1 or CH2), and triggering on an exceedance (rising edge  $\uparrow$ ) or falling below (falling edge  $\downarrow$ ) can be seen in the display area (12.). The threshold is additionally marked to the left of the waveform (11.).
  - The knob (13.) can be used to shift the threshold (**trigger level**). Pressing 50% sets the trigger to the center.
  - The **acquisition status (14.)** is located at the top left of the display area. STOP means a still image is shown. When running, T'D for triggered is shown here.
  - The oscilloscope records a longer time period than the one displayed. The **displayed position in memory (15.)** is shown at the top of the display area. The trigger point is also drawn there. How many (nano-, micro-, or milli-)seconds the trigger point is currently shifted from the displayed center is shown at the bottom right (16.).

On the left you will find a nice introductory video. Note that the specific operation often depends on the manufacturer and model. However, the concepts are the same for all devices.

## Virtual oscilloscopes

A virtual oscilloscope can be found on the pages of [Aachen University](#). Try there to “oscilloscope” various function generator settings, e.g.:

- 200 Hz, sine, offset 1 V, amplitude 5 V
- 200 Hz, square, offset -1 V, amplitude 3 V

What happens if the trigger level is set too high?

[further virtual oscilloscopes](#)

Hochschule Aalen also provides a [virtual oscilloscope](#) for practice.

Another virtual oscilloscope is offered by [TU Berlin](#). However, due to the Java implementation it only

works in a few browsers (e.g. Internet Explorer). In addition, the following must be done:

- Open the Windows app “Configure Java”: <WIN> » Configure Java
- Under Security » Exception Site List add the following servers:
  - <https://www.projektlabor.tu-berlin.de/menue/onlinekurs/scope/>
  - <http://www.projektlabor.tu-berlin.de/> (no https)
- Confirm with OK

## Preparation for the oral short test

For this experiment you should

1. be able to apply and explain the following concepts:
  1. periodic signal
  2. characteristic quantities in the signal-time waveform
    1. peak value (amplitude)
    2. peak-to-peak value
    3. arithmetic mean value
    4. RMS value (quadratic mean)
    5. rectified mean value
    6. period duration
    7. frequency
  3. creating the time waveform of a periodic signal
  4. graphical determination of the above quantities from the time waveform of a signal
  5. capacitance  $C$
  6. behavior of current  $i$  and voltage  $u$  across  $R$  and  $C$  with a rectangular input voltage for  $t=[0; \infty]$
  7.  $i_{C,stat}$  and  $u_{C,rm stat}$  in steady state
  8. time constant  $\tau$
  9. determination of  $R$ ,  $C$ ,  $\tau$ ,  $i_{C,rm stat}$  and  $u_{C,rm stat}$  from the time waveform

From:

<https://wiki.mexle.org/> - **MEXLE Wiki**

Permanent link:

[https://wiki.mexle.org/lab\\_electrical\\_engineering/2\\_capacitors?rev=1774132792](https://wiki.mexle.org/lab_electrical_engineering/2_capacitors?rev=1774132792)

Last update: **2026/03/21 23:39**

